

# Product Data Sheet



## 143X559

Replace "X" with 1, 2 or 3 for number of poles

### Power Splicer/Stud Block 310 Amps, 600 Volts (AC/DC)



See tables below for SCCR wire ranges, flexible stranded and multiple wire approvals.

#### Wire Range:

Line side: (1) 350kcmil - #6 AWG  
Load Side: 3/8 – 16 x 1 1/8" stud

#### Electrical Ratings:

- 310A Copper wire, 250A Aluminum wire (Based on NEC Table 310-16, 75°C columns)
- 600 Volts AC/DC (UL 1059 Class C, User Group - General Industrial)
- Factory and Field Wiring
- Studs intended for use with listed crimp/compression lugs.

#### Short Circuit Current Ratings (Copper wire only):

Suitable Conductors (kcmil/AWG)		Overcurrent Protection Fuse Required Class/Max Amp Rating						SCCR, RMS SYM Amps	Volts Max
Line	Load	J	T	RK1	RK5	G	CC		
350 - 4	350 - 4	400	400	400	100	60	30	65,000	600

#### Mechanical Ratings:

- Maximum insulator base temperature: 150°C (302°F) UL RTI
- Storage and transportation temperature range: -35°C to 125°C (-31°F to 257°F)
- Flammability rating of insulator base: UL 94 V-0
- \* Use outside these ratings needs to be judged in the end-use application

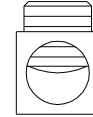
#### Materials:

- Connector: High conductivity aluminum, tin plated
- Insulator base: phenolic
- Terminal set screws: Aluminum, tin plated
- Threaded stud: brass, tin plated
- Connector mounting screws: Steel, zinc plated

- Hex nut: brass, nickel plated (1 supplied per stud)

**Agency Approvals:**

- UL Recognized, UL 1059 Terminal Block Standard, File No. XCFR2.E62806
- CSA Certified, CSA C22.2 No. 158, File No. LR19766 (Wire Classes B & C only)
- CE compliant to IEC 60947-7-1
- RoHS Compliant



**Wire Approvals:**

**Line Side Wire Approvals:**

		Copper Wire Stranding Classes - Number of Strands						
Wire Size	Torque	Solid	Class B	Class C	Class G	Class H	Class I	Class K
350 kcmil	275 in. lbs		37	61				
300	275 in. lbs		37	61				
250	275 in. lbs		37	61	~ 259	~ 427	~ 637	~ 2499
4/0	275 in. lbs		19	37	~ 133	~ 259	~ 532	~ 2107
3/0	275 in. lbs		19	37	~ 133	~ 259	~ 418	~ 1666
2/0	275 in. lbs		19	37	~ 133	~ 259	~ 342	~ 1323
1/0	275 in. lbs		19	37	~ 133	~ 259	~ 266	~ 1064
1	275 in. lbs		19	37	~ 133	~ 259	~ 210	~ 836
2	275 in. lbs		7	19	~ 49	~ 133	~ 161	~ 665
4	275 in. lbs		7	19				
6	275 in. lbs		7	19				

~Quantity of strands for Classes G, H, I, K may vary by manufacturer.

Aluminum stranded wire range: 350 – #6 AWG

**Load Side Wire Approvals:**

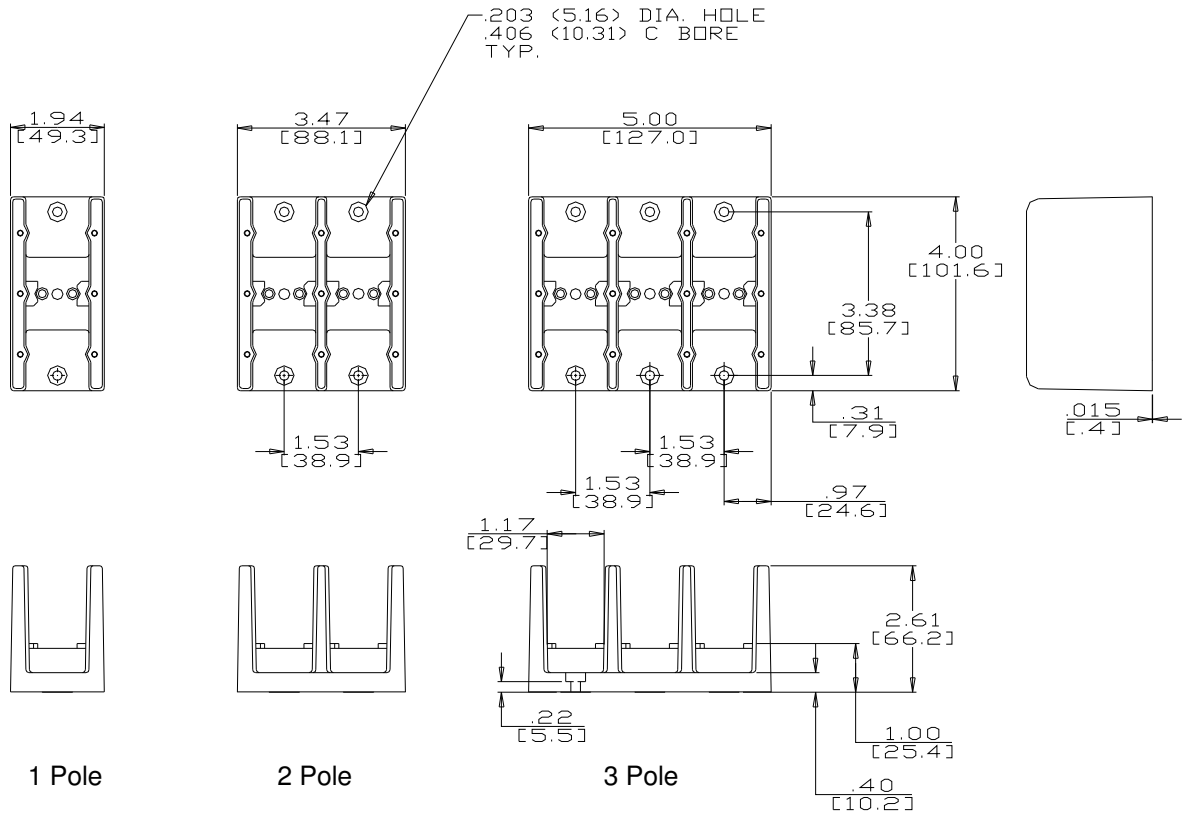


3/8 - 16 x 1 1/8" long threaded studs to accept Listed ring lugs or buss bar.  
Hex nut: 9/16" Across flats, torque to 192 in. lbs.

- Wire strip length, line side tap – 1.0"
- Hex key required: line side - 5/16"
- Panel mountable: #10 fastener, torque to 25-30 in. lbs.

**Accessories:**

- Cover: Clear protective plastic cover. Catalog description CC143X ("X" numbers of poles: 1,2 or 3)
- Marking strip: White vinyl strip to mark circuits. Supplied with mounting screws.
- Printing available. Consult factory.



[WWW.MARATHONSP.COM](http://WWW.MARATHONSP.COM)  
1-419-352-8441

PDS 0067 REV A 9/18/07